



2.CERTIFICATE OF EXAMINATION

ASH 935

Complete

Score	56 / 56 (100%)	Flagged items	0	Actions	0
--------------	----------------	----------------------	---	----------------	---

Site conducted

DAN004 Groveway, Walton, Milton Keynes, Dandara

Conducted on

17 Apr 2026 10:16 AM BST

Prepared by

B.P

Location

H9 Groveway
Milton Keynes England MK7
United Kingdom
(52.01976910733935,
-0.7082411541899445)

Asset

ASH 935
9 Ton Dumper - Dumper 9T
Thwaites MACH 2290

Asset serial number

ASH 935

Asset hours

Supply multiple photo's of asset - all sides, any damage etc

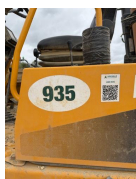


Photo 1

Power unit	11 / 11 (100%)
Oil level	Acceptable
Water/Antifreeze level	Acceptable
Belt tension/Condition	Acceptable
Mountings	Acceptable
Emissions/Exhaust	Acceptable
Oil leaks	Acceptable
Hoses & pipes	Acceptable
Gauges/Warning indicators	Acceptable
Turbo	Acceptable
Air cleaner/Indicator	Acceptable
Spark Arrestor	Acceptable

Transmission	5 / 5 (100%)
Oil levels/Leaks	Acceptable
Controls/Operations	Acceptable
Drive shafts/Axles	Acceptable
Hub reduction units/levels	Acceptable
Transfer box/levels	Acceptable

Brakes	5 / 5 (100%)
Air/Hydraulic leaks	Acceptable
Drums/Discs/Pads/Shoes	Acceptable
Foot/Hand controls	Acceptable
Cables/Rods/Pipes	Acceptable
Fluid levels/Efficiency	Acceptable

Steering	6 / 6 (100%)
Box/Column/Wheel	Acceptable
King Pins/Bushes	Acceptable
Ramp/Pump/Hoses	Acceptable
Track Rods/Steering Arms	Acceptable
Linkages/Ball joints	Acceptable
Oil levels/Leakes	Acceptable

Running Gear	5 / 5 (100%)
Tyres/Wheels/Tracks	Acceptable
Wheel bearings	Acceptable
Axle security	Acceptable
Over run brake rods/cable	Acceptable
Towing/Frame Attachments	Acceptable

Fuel System	4 / 4 (100%)
Fuel tank/Security	Acceptable
Fuel line/leaks	Acceptable
Filters/Pumps	Acceptable
Fuel level/Gauge	Acceptable

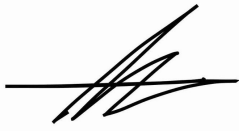
Hydraulics	5 / 5 (100%)
Rams	Acceptable
Pumps/Hoses/Pipes	Acceptable
Safety indicators	Acceptable
Oil levels/leaks	Acceptable
Controls	Acceptable

Electrical	10 / 10 (100%)
Battery	Acceptable
Alternator/Charging	Acceptable
Wiring	Acceptable
Fuses/Circuit breakers	Acceptable
Lights/Indicators	Acceptable
Warning Indicators	Acceptable
Outlet sockets	Acceptable
Limit/Proximity switches	Acceptable
Safety Devices	Acceptable
Warning Devices	Acceptable

Cab	5 / 5 (100%)
Seating/Belts	Acceptable
Structure/Rops	Acceptable
Glass/Mirrors	Acceptable
Mountings	Acceptable
Safe access to components, struts and hinges all in working order	Yes

Sign off

Engineers name & signature

A handwritten signature in black ink, appearing to be 'Brandon Perry', written over a horizontal line.

Brandon Perry
17 Apr 2026 3:38 PM BST

Media summary



Photo 1